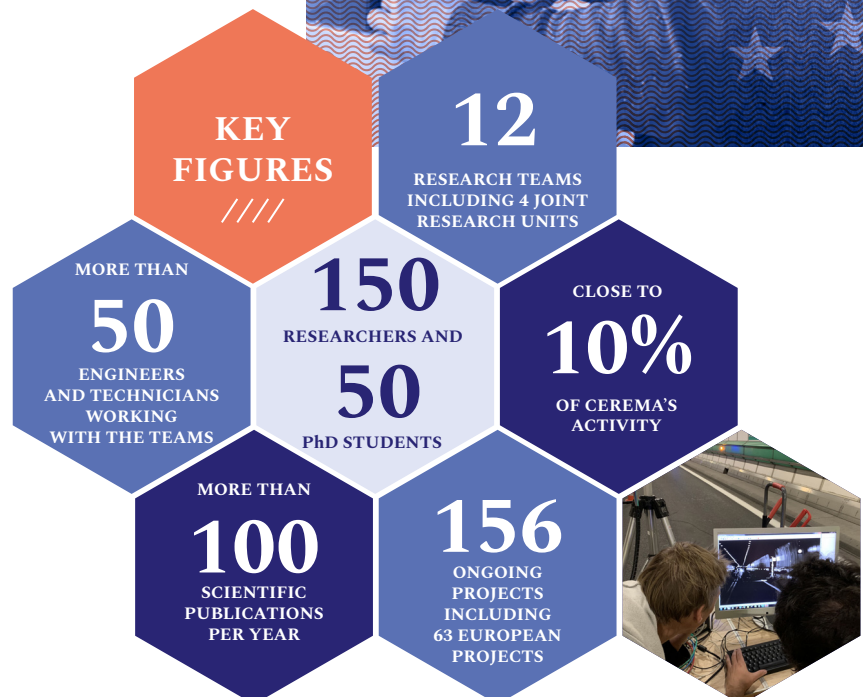


# RESEARCH AT CEREMA

## A MISSION WITH A STRONG OPERATIONAL FOCUS

Through the expertise that our teams apply on a daily basis, research is an essential resource to develop innovations aimed at territories with practical needs.

Cerema is at the heart of the French and European research system, supported by public and private partnerships. It cooperates with research organizations, local authorities or companies of all sizes committed to ecological transition.



Since 2020, Cerema's Institut Carnot - Clim'adapt supports companies and local authorities to innovate through partnered research, to meet the challenges raised by climate change. Clim'adapt is the only Institut Carnot recognized by the French Agence Nationale de la Recherche (ANR) dedicated to climate change issues.

## OUR MAIN FRENCH AND INTERNATIONAL PARTNERSHIPS

### INSTITUTIONS

Gustave Eiffel University  
 CY Cergy Paris University  
 Nice University  
 INRAE

INRIA  
 CNRS  
 ESTP  
 ENTPE

Builders  
 Venice university (Italy)  
 BAST (Germany)  
 Cedex, CSIC (Spain)

CERTH (Greece)  
 ERTICO (Belgium)  
 TNO (Netherlands)  
 VTT Technical Research Centre (Finland)

### LOCAL AUTHORITIES AND COMPANIES

Aereco  
 Colas  
 Lhoist

Predict Services  
 SNCF réseau  
 NOBATEK

VALEO Comfort and Driving  
 Assistance  
 Métropole Grand Lyon

Société du Grand Paris  
 Angers Loire Métropole  
 Limoges Métropole

## OUR 12 RESEARCH TEAMS

### RHITME

Hydraulic risks and environmental impacts at the sea-land interface

### STI

Smart Transport Systems

### EL

Lighting and Light Research Team

### GéoCoD

Geomaterials and geomechanics: coupling and dynamics for geotechnical risks and structures

### UMR GéoAzur (joint research unit)

Response of Soil, Sites and Structures to Dynamic Stresses  
- Earthquakes and vibrations

### ENDSUM

Non Destructive Evaluation of Structures and Materials

### UMR Matris (joint research unit)

Mobility, Planning, Transport, Risks and Society  
With CY Paris Cergy University

### UMR MCD (joint research unit)

Materials for Sustainable Construction  
With Gustave Eiffel university

### UMR AE (joint research unit)

Environmental Acoustics  
With Gustave Eiffel University

### PsyCAP

Applied Psychology research team

### TEAM

Water-related transfers and interactions in built-up environments

### BPE

Efficient Buildings in their Environment



Illustration: Agence 4 Acoût — photo credits: © Cerema — Do not litter

## SOME RESEARCH PROJECTS

- **ROAD-AI** with Inria: finding a new way to manage our roads and civil engineering structures through innovative digital solutions and AI
- **PERMAPYRENEES** - 7 European partners: Studying frozen soil as a new indicator to monitor climate change
- **ROADVIEW** - 15 European partners: developing perception and trajectory control systems for self-driving vehicles in difficult weather conditions

ALL OUR RESEARCH PROJECTS



SCAN TO SEE ALL OF OUR SCIENTIFIC PAPERS



[www.cerema.fr](http://www.cerema.fr)

[in @cerema](https://www.linkedin.com/company/cerema)

[X @CeremaCom](https://x.com/CeremaCom)

[recherche.dr2i.cerema@cerema.fr](mailto:recherche.dr2i.cerema@cerema.fr)  
[climadapt@cerema.fr](mailto:climadapt@cerema.fr)