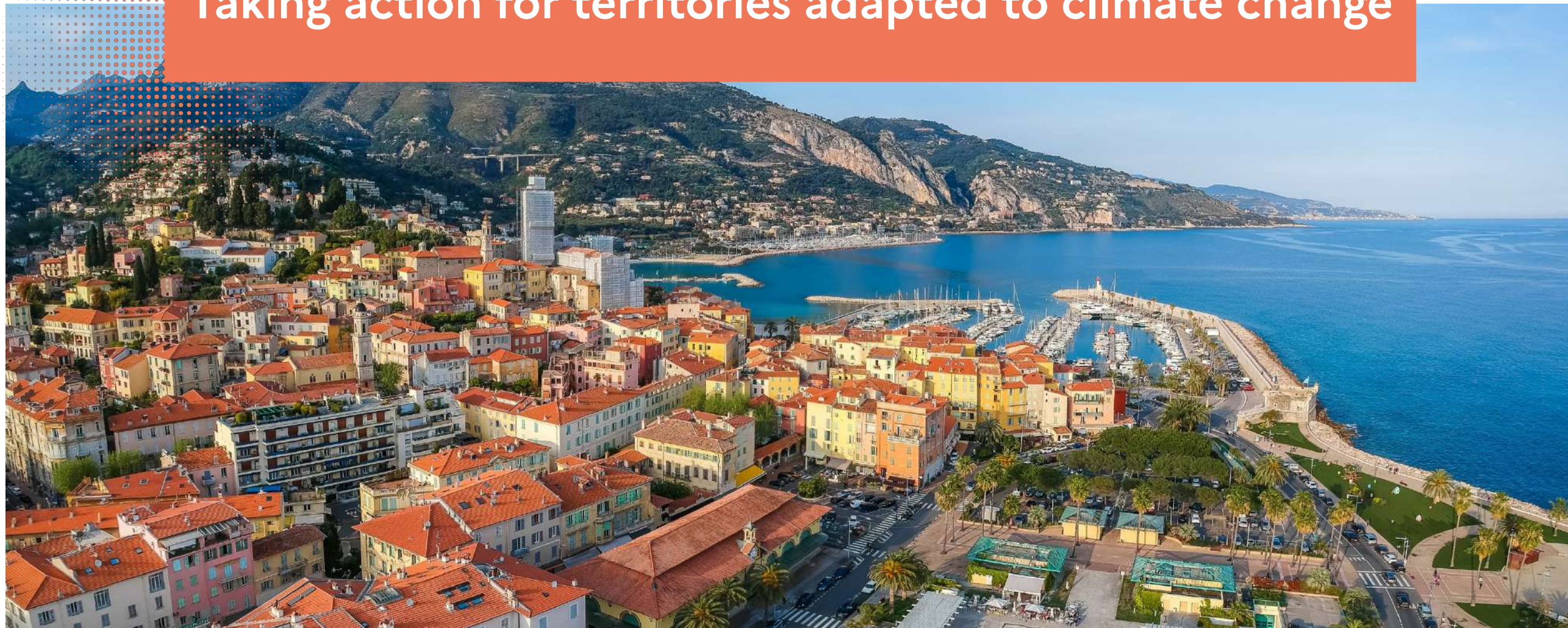



Taking action for territories adapted to climate change





Cerema*, a public authority in regional planning, supports the State, local authorities and businesses in adapting regions to the climate challenge.

* Cerema is a public institution under the authority of the ministries responsible for regional planning and Ecological Transition.

Cerema at a glance

Taking action to make regions fit for climate change

Cerema's three missions

A public service providing expertise for all regions: urban, rural, coastal and mountainous

An international dimension

Our main partners

Your local contacts

TAKING ACTION FOR TERRITORIES ADAPTED TO CLIMATE CHANGE

Cerema plays a key role in the development and implementation national public policies and regional projects adapted to the climate of tomorrow **in six areas of activity:**

- **Regional planning and strategies**
Envisioning and designing new ways of developing territories
- **Buildings**
Adapting buildings to climate change and improving their quality of use and accessibility
- **Mobility**
Developing carbon-free, secure mobility services for everyone and for all regions
- **Transport infrastructure**
Ensuring the efficiency and sustainability of transport networks
- **Environment and risks**
Prevent natural risks and preserve the environment in the context of development projects
- **Sea and coastline**
Adapting coastal areas to climate change and ensuring the safety of maritime and river activities

CEREMA'S THREE MISSIONS

A local, innovative, collaborative and unifying approach.



Advise & Design

Supporting local authorities, government departments and businesses in adapting public policies and projects to climate change.

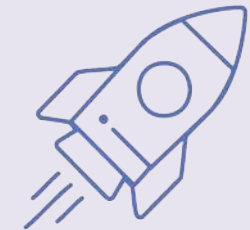
Be the point of reference for regions facing climate challenges



Develop, disseminate & facilitate

Produce and disseminate freely accessible knowledge (standards, doctrine, rules, studies, tools and methods, etc.).

Be the conduit for knowledge

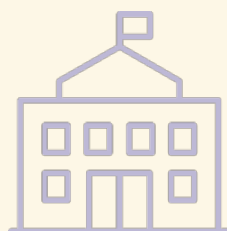


Research & Innovate

Conduct research focused towards operational applications to accelerate the expertise of tomorrow.

Be the accelerator of expertise and solutions for tomorrow

A PUBLIC EXPERTISE SERVICE FOR ALL TERRITORIES, URBAN, RURAL, COASTAL OR MOUNTAIN



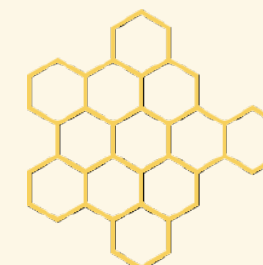
1st public institution at both national and local level

Over **70** years of experience

More than **1,000** member local authorities

2,500

multidisciplinary staff members



27

locations across mainland France and overseas territories

11,000

references available freely accessible



100 new editions per year

FIRST PUBLIC INSTITUTION BOTH NATIONAL AND LOCAL

Throughout mainland France and its overseas territories, alongside government departments and local authorities, Cerema plays a key role in developing and implementing national public policies and regional projects adapted to the climate of tomorrow.

1,000

local authorities in mainland France and overseas territories that are members of Cerema in May 2025, including:

16

regions

87

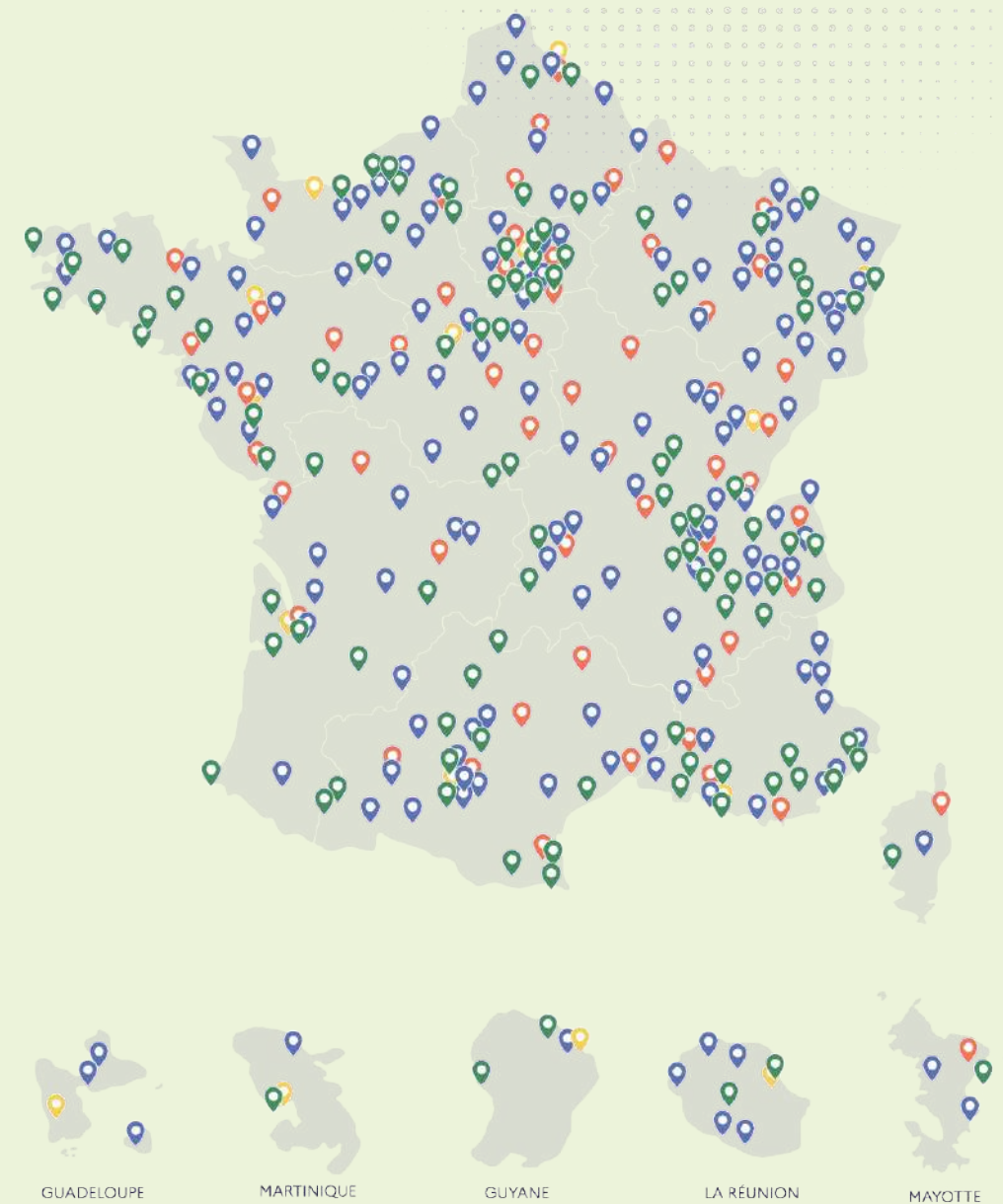
departments

467

municipalities

430

EPCI



AN INTERNATIONAL DIMENSION

Internationally, Cerema is positioned as a key player in the dissemination and sharing of knowledge, standardisation and technical support in its fields of expertise:

- Research and innovation at European/international level
- Support for European neighbourhood policy
- State development aid policy
- Decentralised cooperation between local authorities
- International business development
- International standardisation and certification

*735 missions carried out
in 53 countries*

INTERNATIONAL INVOLVEMENT AND PARTNERSHIPS

International organisations



European partners



EUROPEAN PROJECTS



Cofinanciado por
la UNIÓN EUROPEA
Cofinancé par
l'UNION EUROPÉENNE



Co-funded by
the European Union



Co-funded by
the European Union



EN PARTENARIAT AVEC LA RÉGION AUVERGNE-RHÔNE-ALPES

OUR MAIN PARTNERS

Local authorities

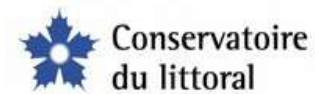


Associations

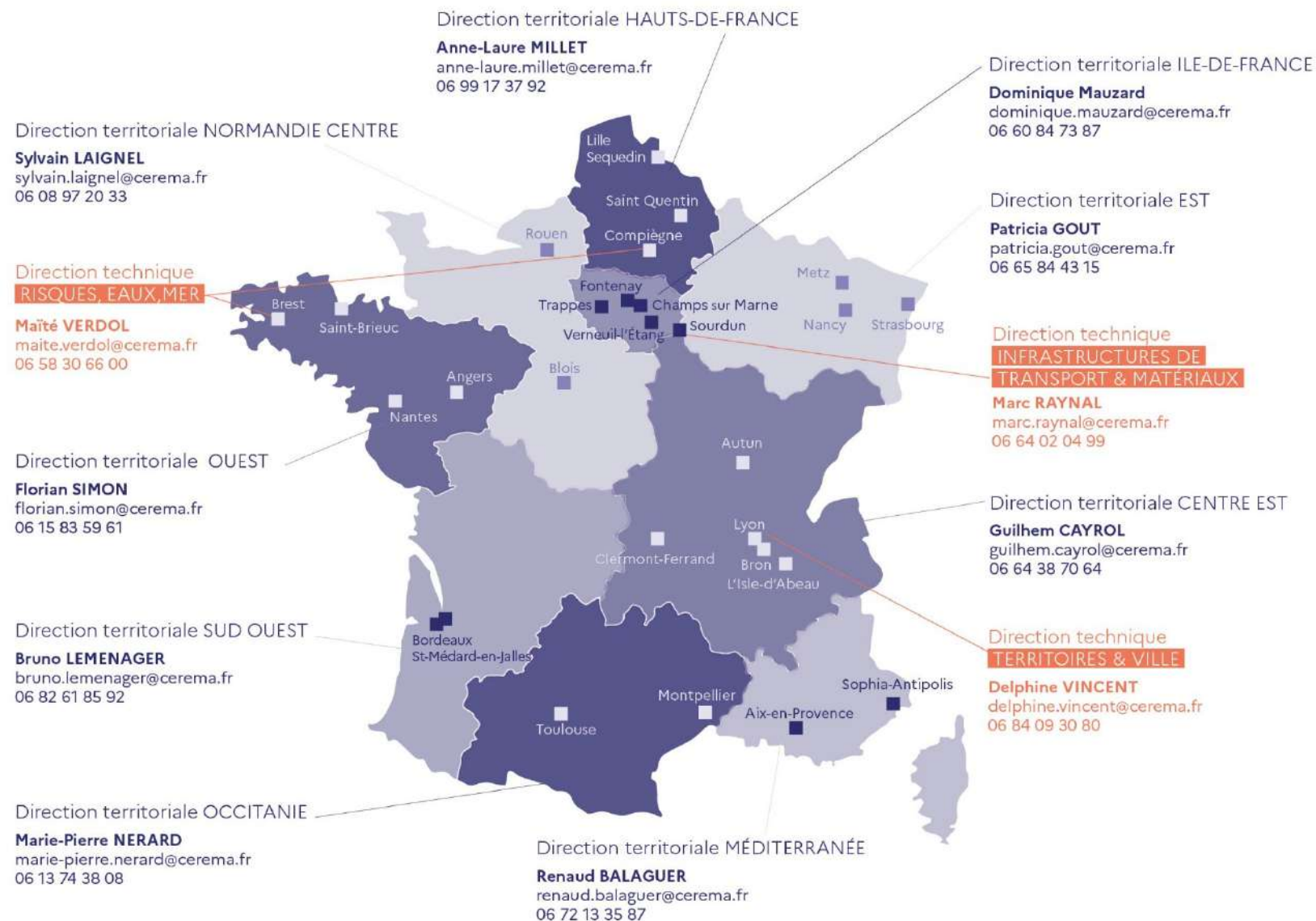


OUR MAIN PARTNERS

Scientific and technical



YOUR LOCAL CONTACTS



Direction territoriale OUTRE-MER



GUADELOUPE



MARTINIQUE

Agence Antilles
Yannis CESARIN
 yannis.cesarin@cerema.fr - 06 64 23 45 67



SAINT-MARTIN



SAINT-BARTHELEMY



POLYNÉSIE FRANÇAISE



WALLIS ET FUTUNA



SAINT-PIERRE ET MIQUELON



NOUVELLE CALÉDONIE



GUYANE

Agence Guyane
Etienne JACQUES
 etienne.jacques@cerema.fr - 06 16 67 49 12



MAYOTTE



LA RÉUNION

Agence Océan Indien
José-Luis DELGADO
 jose-luis.delgado@cerema.fr - 06 24 83 03 63

Cerema's three missions



Advise & Design

Develop, Disseminate &
Facilitate

Research & Innovate



ADVICE & DESIGN

Being the point of reference for regions facing climate change challenges

The Cerema supports local authorities, state services and companies in the development and implementation of territorial development projects adapted to climate change, as part of local initiatives or national programs.

It designs and provides methods, services, tools, diagnostics and assessments.

It is ISO 9001 certified.

Cerema's services

- Exploratory, strategic or operational studies
- Regional diagnostics
- Project management assistance (PMA):
 - Definition and qualification of needs
 - Selection of service providers
 - Strategic decision-making support
 - Methodological support
- Coordination of multi-stakeholder and multi-thematic projects
- Awareness raising and training
- Standardisation, certification and labelling
- Provision of services to businesses



ADVISE & DESIGN

Being the point of reference for regions facing climate challenges

EXAMPLES OF APPLICATION

- Designing public spaces to cope with heat waves
- Making transport infrastructure resilient
- Anticipating flood risks
- Adapting built heritage to climate change
- Making soil an ally in the face of climate change
- Optimising water resources
- Managing coastal change
- Involving citizens in regional projects





DEVELOP, DISSEMINATE & FACILITATE

Being a conduit for knowledge

As a national public resource centre, Cerema produces a wealth of knowledge and studies related to its activities, including elements doctrine and best practices.

All this public data is freely accessible to support innovation and best practices in order to support regional stakeholders in implementing their projects.

Cerema's services

- Development and dissemination of standards, doctrine and best practices
- Production of data, statistics and reference materials
- Production of study reports, guides and technical advice, feedback, etc.
- Capitalisation of methods and recommendations
- Dissemination of solutions, services and tools
- Training, facilitation and awareness-raising



DEVELOP, DISTRIBUTE & FACILITATE

Being a conduit for knowledge

MAIN RESOURCES



Cerema publications

Over 3,000 publications, divided into six collections:

References, Files, Notebooks, Resources, Essentials and Proceedings

All research reports, press articles and scientific publications on the **doc.cerema.fr** document platform



Training catalogue



Cerema is accredited to provide training for local elected officials



Regional Technical Conferences (CTT)

Regional meetings between local stakeholders with the aim of sharing expertise, feedback and solutions for the benefit of the regions.



Platform Expertises.territoires

Collaborative platform organised into thematic communities to help co-develop national or regional projects adapted to the climate challenge.

expertises-territoires.fr

Cerema.fr Institutional website



RESEARCH & INNOVATION

Accelerating tomorrow's expertise

Cerema is engaged in research missions focused on operations and innovation with the aim of building tomorrow's expertise, in close relations with its partners

Cerema's services

- Applied research: bridging the gap between academia and operational engineering
- Open innovation, technological development and dissemination:
 - Technology platforms
 - Experiments
 - Prototyping
 - Certifications and ecosystem facilitation
- Digital innovation:
 - Qualified and certified reference frameworks and datasets
 - Innovative, user-centred digital services and tools based on shared business knowledge and capable of harnessing artificial intelligence (AI)
- Projects funded by the European Union (H2020, Interreg, Life, etc.)
- Carnot Clim'adapt Institute (see next page)

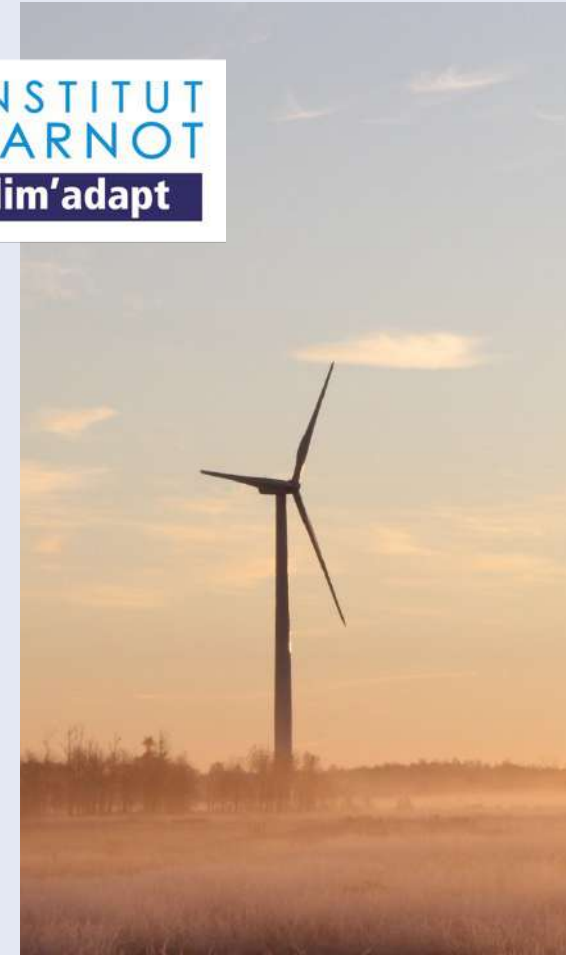


RESEARCH & INNOVATION

Being the accelerator of tomorrow's expertise

The Carnot Clim'adapt institute, supported by Cerema, is a strategic partner for companies to innovate in resource-efficient, decarbonised and environmentally friendly solutions.

Through research partnerships, it provides scientific and technical excellence to its experts.



The six areas of activity of Cerema

Planning
and territorial strategies

Building

Mobility

Transport infrastructure

Environment and risks

Sea & coastline



PLANNING AND TERRITORIAL STRATEGIES

Climate, environmental and societal challenges require **changes to existing developments and practices** at all levels.

From operational projects to regional strategies, Cerema supports local authorities by providing land data, analyses, methods and tools.

It also helps to strengthen citizen involvement and better integrate complex issues **to prepare regions for the challenges of tomorrow.**

Themes

Territorial transition

- Towards strong sustainability
- Adaptation to climate change

Sustainable development

- From large territories to neighbourhood scale
- From global strategies to operational planning

Knowledge and mobilisation of land

- High-performance data and tools
- Land sobriety strategies



DEVELOPMENT AND TERRITORIAL STRATEGIES

They called on us



Department of Lot Assessment of vulnerabilities to climate change

Faced with increasingly severe climate hazards affecting its territory, Cerema teams assisted the Lot Department in an initiative to assess local sensitivities and expected climate change by 2050, identify sectoral vulnerabilities through collaborative workshops, co-develop facilitation tools, and prepare a structured adaptation plan based on the department's expertise.

Community of municipalities of South Mayotte Support for the recovery and transition contract

Faced with strong population growth and socio-environmental vulnerabilities, Cerema supported the local authority in structuring a territorial strategy for ecological and solidarity-based transition, prioritising actions according to local needs and mobilising institutional partners around a shared roadmap.

Limoges Metropolitan Area Support in developing an economic land use strategy

Faced with a shortage of land impacting economic development, Cerema's teams assisted the metropolitan area in inventorying and characterising available land, analysing the obstacles to its mobilisation, and raising awareness among stakeholders about the densification of economic land for better management.



LAND USE PLANNING AND REGIONAL STRATEGIES

Climate Change Resource Centre

Resilience Compass

Tool dedicated to regional resilience

UrbanSIMUL

Solution for land use analysis and simulation for land use efficiency initiatives

Cartofriches

Website containing data on the national inventory of brownfield sites, based on local and national data

Planning tool

Reference site providing information and tools to support regional planning

Find out more

[Find all resources in the field of](#)





BUILDING

Whether new or old, every building must respond the climate challenge.

Cerema supports **managers of public and private real estate assets** in applying **regulations and innovating** their practices.

It offers solutions for energy and environmental performance, ventilation and air quality, accessibility and user well-being for users, while keeping costs under control.

Themes

Performance optimisation in public and commercial buildings

- Energy efficiency (deployment of tertiary eco-energy measures)
- Ventilation
- Summer comfort
- Accessibility
- Adaptation to climate change and reduction of carbon impact (bio-based materials)

Public property management



BUILDING

They called on us



ACTEE Cube challenges

Integrating a collective challenge to maximise energy savings

Cerema teams are supporting the development of ACTEE Cube programmes, which aim to encourage staff to adopt eco-friendly habits and monitor consumption, reduce energy consumption by up to 15% in one year without major works, and prepare action plans for more ambitious future renovations.

Municipality of Château-Salins (57)

Real estate and energy strategy

As part of an energy transition and sustainable management of its built heritage, Cerema supported the municipality of Château-Salins in assessing its property portfolio, identifying levers for energy and functional optimisation, and developing a roadmap for adapting, renovating or reorganising municipal buildings.

Municipality of Couches (71)

Multi-issue assessment of the Bergerie village hall > Multi-issue assessment of municipal buildings

With a view to sustainable renovation and improved user comfort, Cerema's teams assisted the municipality in assessing indoor air quality, acoustics and thermal performance, identifying areas for improvement in terms of energy and health, and helping the municipality to define an appropriate programme of works.

BUILDING



RITE

Tool for assessing the risk of summer thermal discomfort in housing



Guides - Public buildings
"Saving energy"
"Inaction is costly"

Find out more

Find all resources in this field





MOBILITY

Mobility services must evolve to **meet ecological, service and safety challenges in different regions.**

Cerema conducts assessments, provides data, develops and implements projects, disseminates best practices and supports innovation.

It contributes to **the deployment of policies and services that are carbon-free, efficient, safe and accessible to all.**

Themes

Decarbonisation of transport

- Intermodality, carpooling, traffic regulation, electric mobility, active modes of transport, ZFE-m, sustainable logistics

Innovation and digital technology

- Smart mobility, mobility data, opening up EMC² data as open data, new mobility services

Travel safety

- Accident rates and facilities for vulnerable users, pedestrians, cyclists, personal mobility devices



MOBILITY

They called on us



Communauté de communes des Sources de l'Orne Mobility strategy in sparsely populated areas

Faced with the challenges of accessibility, autonomy and energy efficiency, Cerema teams have supported the local authority in assessing mobility practices and the specific needs of residents, identifying solutions adapted to low population densities, mobilising local stakeholders to co-develop solutions and defining an operational roadmap.

Haute Garonne Department Establishment of a Réseau Express Vélo (high-level service cycle network)

In order to inform decisions on cycling infrastructure, Cerema provided the department with regulatory and technical support to define a high-level service cycling network, a technical analysis of the choice of infrastructure adapted to traffic, speed and the desired number of cyclists, and a reasoned opinion on the proposed route.

Pays de Loire region Evaluation and monitoring of the carpooling scheme

Since 2021, Cerema teams have been assisting the Region in designing, evaluating and improving its carpooling scheme, a lever for transition in sparsely populated areas: strategic and technical support, impact assessment, and capitalisation at regional and national level as part of the National Carpooling Plan.

MOBILITY

Guide to facilitating cyclist traffic / facilities

CAPAMOB

Diagnostic tool and strategy definition aid for mobility in low-density areas

LUD+

National energy saving certificate scheme to promote the development of sustainable urban logistics charters

National methodology for implementing the directive on road infrastructure safety management (2019/19396/EC)

Find out more

[Find all resources in this field](#)





TRANSPORT INFRASTRUCTURE

Transport infrastructure must adapt to **new uses and climate change.**

Cerema supports local authorities, managers and companies in **designing, maintaining, modernising and adapting infrastructure** at the lowest economic and environmental cost.

Themes

Adaptation to climate change

- Infrastructure resilience, decarbonisation, adaptation of road policy

Road asset management

- Infrastructure monitoring and management tools, adaptation to new uses

Digital innovation and AI:

- Data management and integration of AI into asset management

Standardisation, certification, labelling



TRANSPORT INFRASTRUCTURE

They called on us



Montpellier Méditerranée Métropole

Definition of the road asset management policy for Montpellier Méditerranée Métropole

Cerema assisted Montpellier Méditerranée Métropole in developing an innovative methodology for managing its road network, cycle paths and pavements. This approach provides a consistent overview of the state of the infrastructure, the definition of appropriate quality levels and the optimised prioritisation of maintenance work.

Ivry-la-Bataille (Eure)

Assistance with the management of engineering structures

Cerema teams assisted the municipality in identifying and mapping its engineering structures, assessing their condition, identifying maintenance needs and priority works, and proposing a management plan and a digital tool dedicated to asset management.

Provence-Alpes-Côte d'Azur Region

Transport infrastructure resilience study

Cerema teams assisted the Provence-Alpes-Côte d'Azur Region in analysing the climate vulnerabilities of its road, rail, port and airport networks. Cerema's method made it possible to identify sensitive areas and propose appropriate adaptation solutions, thereby strengthening the overall resilience of infrastructure to climate change. The study supports the preparation of a unified adaptation plan for all managers and operators in the region.

TRANSPORT INFRASTRUCTURE

Tools and methods for optimising road network management.

High-performance inspection equipment

Methodologies adapted to different types of road networks

Adapting infrastructure to climate change

Systemic approach to adapting transport infrastructure (ASAIT method),
Observatory of Roads Damaged by Drought (ORSS), Clay Shrinkage-Swelling (RGA)

Toolkit for managing municipal bridges

PILES - Engineering structures platform

Thematic website on the design, management and maintenance of engineering structures.

DTRF - Documentation of French Road Techniques

Reference site on the design, maintenance and operation of road infrastructure in France, with standards, guides and recognised practices

Find out more

[Find all resources in this field](#)





ENVIRONMENT & RISKS

Development projects and infrastructure projects must integrate **biodiversity, resource management, pollution, quality of life and the adaptation of territories to climate change.**

Cerema supports regions in **better preventing natural risks and nuisances, preserving resources and the environment, and promoting the production of renewable energy and carbon-free materials.**

Themes

Protecting populations from natural hazards and nuisances

- Prevention and management of natural flood risks, management of natural land risks, assessment of territorial vulnerability, risk culture
- National Air Quality Programme
- Assessment of the impacts of noise and vibration pollution

Preserving natural resources and biodiversity

- Integrated urban water management strategies, sustainable management of hydrosystems
- Nature in cities, cooling islands, ecological environments and networks, soil de-sealing, biodiversity and infrastructure

Reducing the environmental impact of energy and construction materials

- Circular economy for construction materials, decarbonisation of infrastructure, resource conservation
- Energy transition, development of renewable energies and regional energy and climate strategies



ENVIRONMENT & RISKS

They called on us



Martinique (972)

Identification of offshore renewable energy sources

As part of the energy transition and efforts to harness maritime potential, Cerema mapped offshore renewable energy sources, analysed technical, environmental and regulatory constraints, identified favourable areas and proposed development scenarios compatible with local uses and ecosystems.

Toulon Provence Méditerranée Metropolis (83)

Integration of urban overheating into development projects

Cerema supported the metropolitan area in its efforts to adapt to climate change and improve the living environment. The teams diagnosed heat islands, identified levers for mitigating overheating and integrated these issues into planning documents, and proposed operational tools for development stakeholders.

Convergence Garonne Community of Municipalities

Study of flood risk due to runoff

Faced with the increasing risk associated with heavy rainfall, Cerema supported the community of municipalities in an innovative study aimed at mapping runoff risk in detail, cross-referencing risk areas with local issues, and defining clear regulatory zoning and appropriate urban planning rules to better guide future development.



ENVIRONMENT & RISKS

Local Climate Zones (LCZ)

National mapping of urban heat islands

AGIRISK

Tool for diagnosing and monitoring the vulnerability of territories to flooding

SESAME

Solution for integrating trees into urban development projects, promoting the ecosystem services of each species to adapt to different territories

EnRezo

National mapping of the development potential of heating and cooling networks

2EC label

National label for developing and promoting the circular economy in construction and development projects

Find out more

[Find all resources in this field](#)





SEA & COAST

As the only public institution to take into account all **coastal, maritime and river issues**, Cerema supports the State, local authorities and businesses in their projects to **control impacts** on marine and coastal environments, **adapt to coastal erosion** and improving the **performance and safety of maritime and river transport**.

Themes

Adaptation of coastal areas to climate change

- Support for coastal knowledge and observation, resilient projects, and coastline management

Impacts of activities and developments on the coastline and marine environment

Navigation and maritime safety

- Navigation assistance, observation, analysis and monitoring of maritime traffic

Ecological transition of ports and waterways



SEA & COAST

They called on us



Hérault Méditerranée urban community

Preparing for the future and testing innovative solutions on the coast

As part of an approach to adapt to climate and environmental challenges, Cerema has supported the local authority in identifying and testing innovative solutions for coastal management, evaluating their effectiveness, supporting local stakeholders and laying the foundations for a strategic framework for long-term coastal management.

Master plan for dredging operations and territorial valorisation of sediments

Towards sustainable and territorialised sediment management

With a view to sustainable sediment management and optimisation of local resources, Cerema has developed a master plan aimed at identifying dredging needs, identifying recovery channels, planning operations at the territorial level and integrating all environmental, technical and regulatory issues.

Inland ports of the Upper Rhine (European project)

Challenges and solutions for adapting to climate change

In a context of global warming and extreme weather events, Cerema is involved in the Interreg CRANE programme to identify climate hazards and risks that could affect ports, analyse vulnerabilities, develop a shared adaptation strategy and mobilise the relevant stakeholders.



SEA & COAST

GéoLittoral

An overview of public policies relating to the sea and coastline.

Reports and coastline projection map

Produced by Cerema, these provide a better understanding of coastal erosion across mainland France and its overseas territories.

Candhis

The national coastal observatory for wave measurement.

Offshore wind turbines in France

This website presents the state of offshore wind power development in France. It centralises information on each project: technical characteristics, consultation documents, studies carried out on the areas, etc.

Find out more

Find all the resources
in this field



Governance and operation of Cerema

Our governing bodies

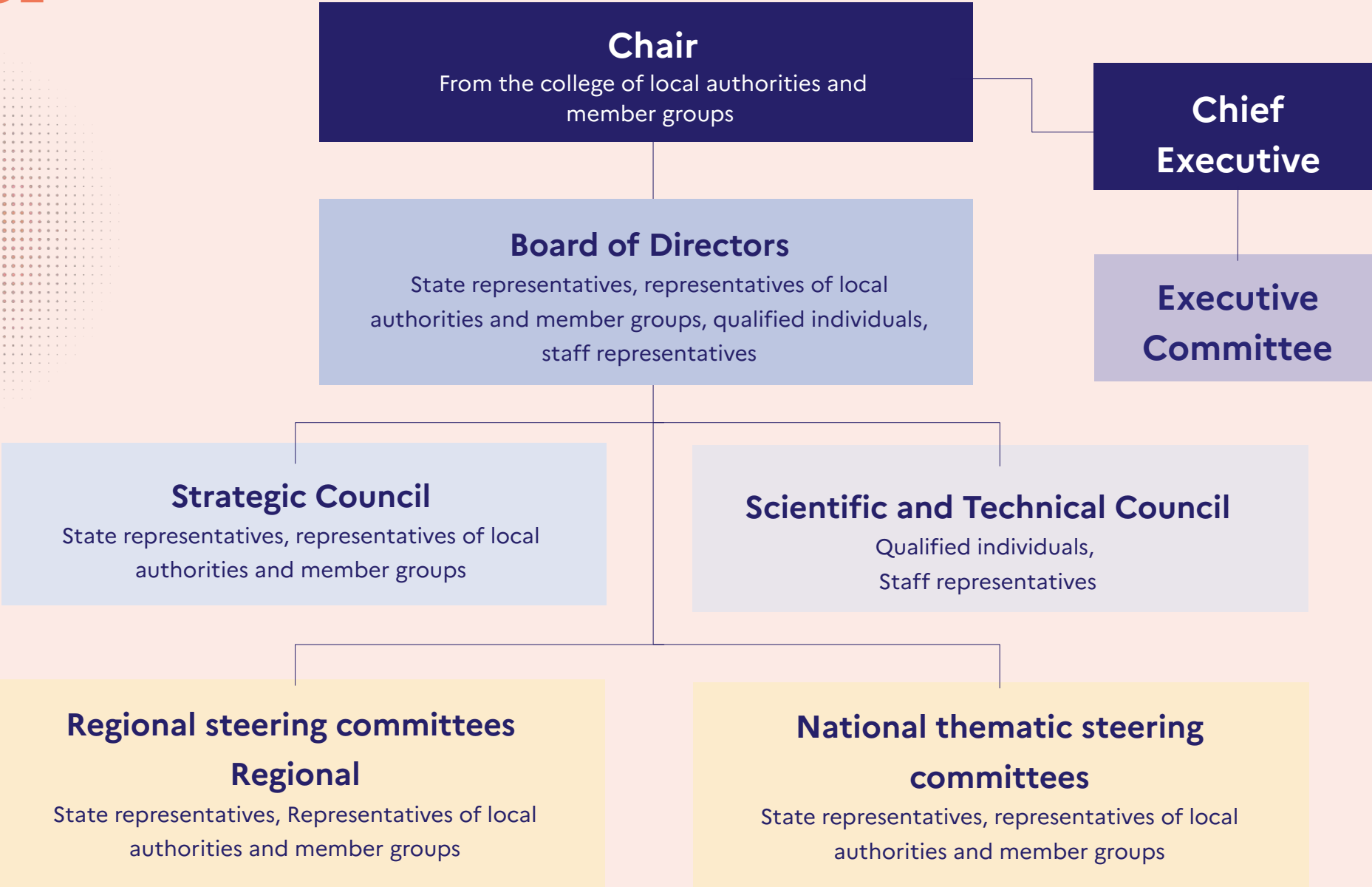
Our operations

OUR GOVERNANCE

Since May 2023, member local authorities have been represented within the institution's governing bodies.

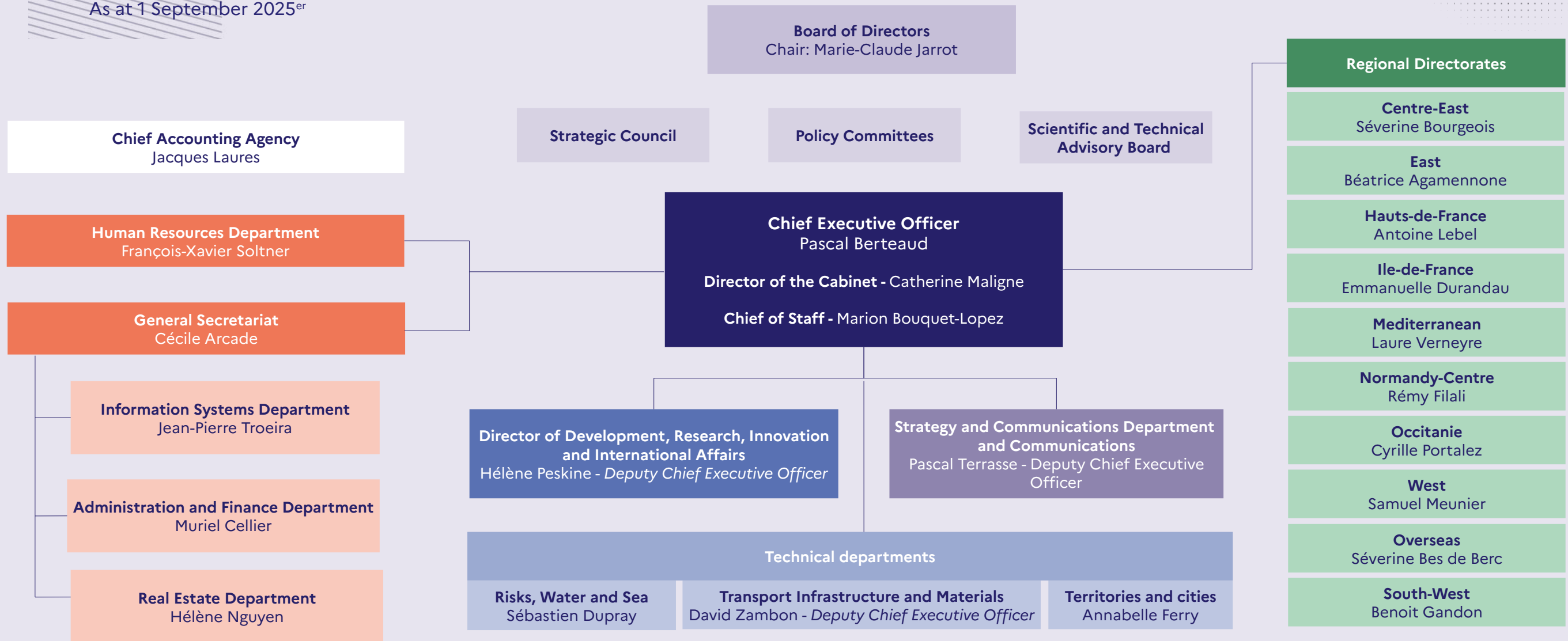
More than 1,000 member local authorities can call on Cerema without a call for tenders thanks to the "quasi-public service" system:

- regions
- departments
- public establishments for inter-municipal cooperation
- municipalities



HOW WE WORK

As at 1 September 2025^{er}



www.cerema.fr

